

Artist Profile - Stephanie Dimmock

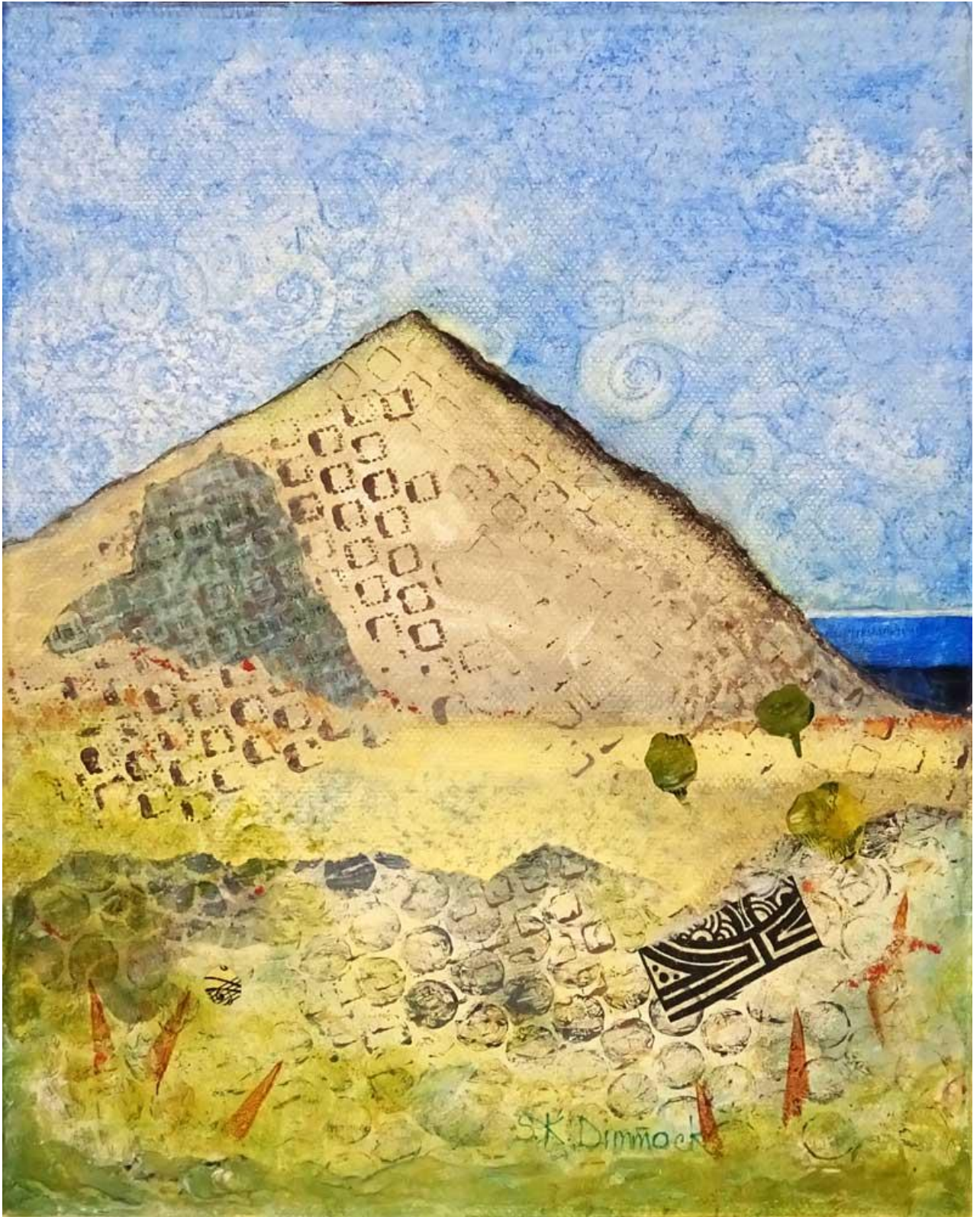
Stephanie has been painting and exhibiting her work since the mid-1970s. She recently moved to the Great Southern region, where she works full-time in her studio. Her paintings and drawings tell stories of historical findings, scientific occurrences, domestic dreams and outright myths.

Working in layers, she may begin with impressed textural detail, adding glazes in acrylic or oil. Printmaking techniques such as stamping, monoprinting, and linocutting are used to create one-off prints, which are torn or cut up and incorporated as collage elements. Details may be added with oil pastel, charcoal, graphite or carbon smoke to create a sense of atmosphere and depth.

Her work has been purchased by private collectors throughout Australia. Stephanie will now be including her work in Albany Art Group's frequent exhibitions.



'Ancient Artifact'



'Hill of Dreams (Morning)'